

Fact Sheet

BIZERBA

Q1 expert

This innovative retail scale Q1 expert is ideally suitable for assisted sales, self-service and price labeling. Fitted with a capacitive touchscreen, the Q1 expert is multi-touch capable allowing easy and efficient operation by means of its own device software. The particularly flat load platter gives customers an optimal view of products. Thanks to a sleek design, your team has unhindered access to the products in the deli counter.



More information
High performance
with a wide range of
solutions and options.

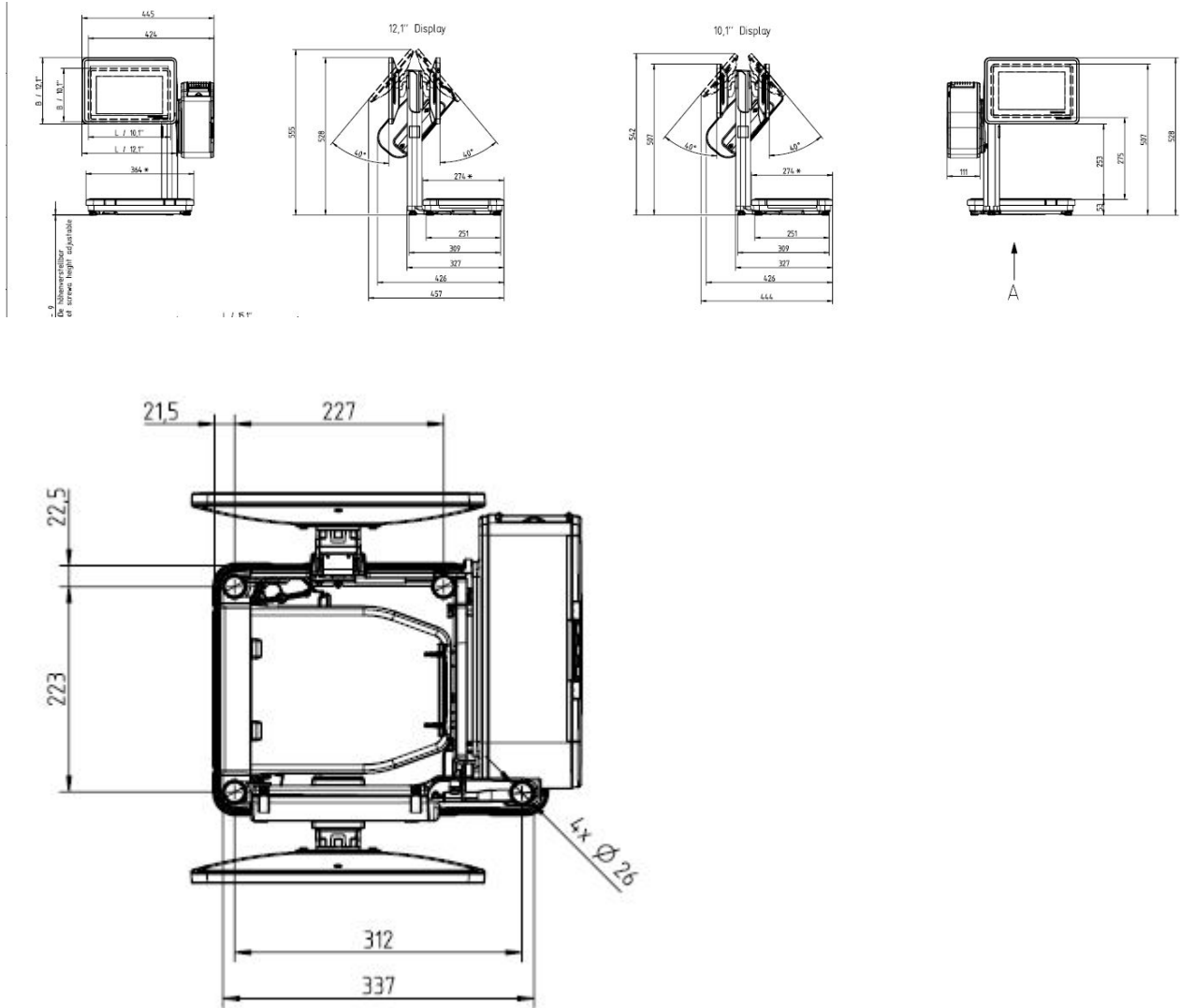
Specifications	Facts	Details
Variants	Q1 expert 800 - counter scale	Operator display: 10"/12" Customer display: without/10"/12"
	Q1 expert 400 - hanging scale	Operator display: 10"/12" Customer display: without/10"/12"
	Q1 expert 100 - counter top scale	Operator display: 10"/12" Customer display: without/10"/12"/ on a stand 10"/12"
Color	Signal black	RAL 9004
Operating system	Windows 10	
Device software	RetailBridge	Prepared for OEM / 3rd-party software
Processor	Intel Elkhart Lake X6413E	
Working memory	DDR4 RAM	8 GB and 16 GB
Mass storage	SSD	128 GB and 256 GB
Operator display	10" display with touch screen (capacitive)	- Resolution: 1024 x 600 px (WSVGA) - Infinitely adjustable viewing angle - Antireflective glass - Can be operated with gloves
	12" display with touch screen (capacitive)	- Resolution: 1280 x 800 (16:10, WXGA) - Infinitely adjustable viewing angle - Antireflective glass - Can be operated with gloves
Customer display	10" display	- Resolution: 1024 x 600 px (WSVGA) - Infinitely adjustable viewing angle
	12" display	- Resolution: 1280 x 800 px (WXGA) - Infinitely adjustable viewing angle
2" receipt/linerless printer or 2" receipt/label printer	Print speed	Max. 100 mm/s
	Roll diameter	Standard 105 mm
	Roll width	58 mm
	Auto-cutter for receipt/linerless (option)	- Properties depending on paper quality and amount of adhesive - More than 500,000 cuts without having to replace cutting components

Specifications	Facts	Details
		This performance can be guaranteed with Bizerba paper. Paper from third party providers may not achieve the same results.
Interfaces	1 x USB 3.0 type A 2 x USB 2.0 type A 1 x RJ45 1 x RJ12	Super speed High speed Ethernet LAN 10/100/1,000 MBit/s For connection to cash register drawer
Weighing range	3/6 kg 6 kg (Italy) 12 kg (Italy) 6/15 kg 15/30 kg 30 kg (Italy)	Scale interval 1/2 g, minimum load 20 g Scale interval 2 g, minimum load 20 g Scale interval 2 g, minimum load 40 g Scale interval 2/5 g, minimum load 40 g Scale interval 5/10 g, minimum load 100 g Scale interval 5 g, minimum load 100 g
Temperature range & humidity	-10 °C to +40 °C operating temperature	Max. relative humidity 90 % (non-condensing)
Power supply	120-240 V	
Power consumption	In operation: 29.6W (12" operator display + 10" customer display) Stand-by: 1.5W	Performance depending on configuration. Energy savings thanks to use of Wake on LAN/WLAN
Net weight (without packaging)	13.7 kg 17.7 kg 14.5 kg	Q1 expert 800 Q1 expert 400 Q1 expert 100
Options	Facts	Details
WLAN module	Optionally retrofittable	Frequency range: 2.4 GHz - 5.0 GHz

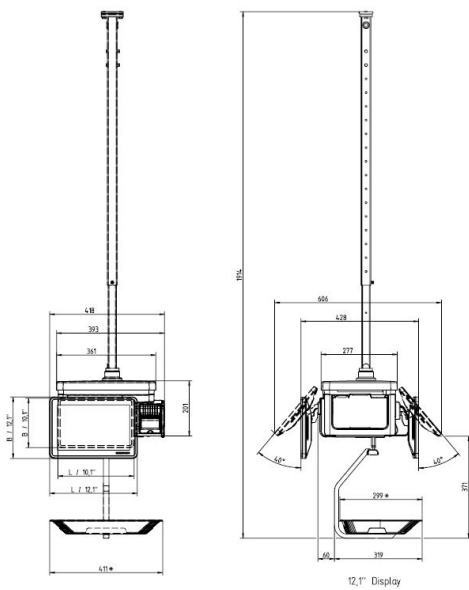
Info graphics



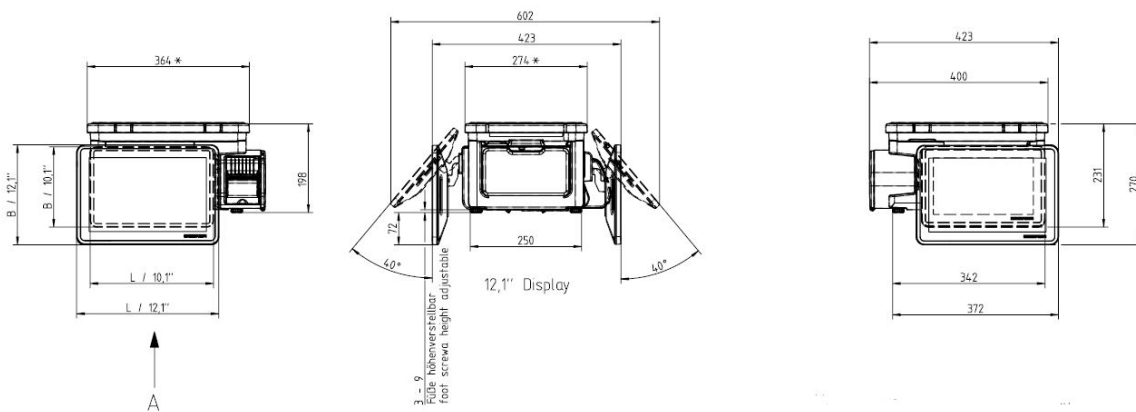
Dimensional drawings



Q1 expert 800



Q1 expert 400



Q1 expert 100